

Review of Leicester City Council's Draft Climate Emergency Action Plan (2023-2028)

Produced by the Leicester Climate Emergency Partnership
October 2023

Presented by Dr Jose Hernandez
Director, Head of Sustainability and Energy
Pick Everard

Climate Emergency Partnership Feedback

- Active Together
 - De Montfort University
 - Leicester City Council
 - LLEP
 - Leicestershire & Rutland Wildlife Trust
 - Midlands Net Zero Hub
 - National Grid
 - NHS East Leicestershire and Rutland CCG
 - Pick Everard
 - Severn Trent Water
 - UHL NHS Trust
 - University of Leicester
-
- Process
 - Draft document shared
 - Comments collected
 - Discussion meeting with LCC Officers
 - Report produced

Feedback

- The council, the city, our communities, our society are on a journey. Reinforce that the speed of carbon reduction, and thus actions and policies to support that speed and create acceleration are required. Good and robust plan heading in the right direction.
- Acknowledgement and understanding of need for action and delivery challenges, including policy and funding.
- Need to have cognisance of national policy but also set a direction regardless and be adaptable to policy changes during the duration of the plan.
- Reinforce the need not only for capital funding for projects utilising existing frameworks and procurement routes to increase speed delivery but also for staff resources to deliver the plan.
- Reinforce focus on refurbishments, Social Value, Whole Life Carbon and Cost Analysis and Circular Economy.

Feedback

- Reinforce the partnership development actions with neighbouring Local Authorities / outside organisations and regions as it is important that the City Council delivers its Climate Action Plan in coordination and takes into consideration outside influences and opportunities.
- Link to the Local Area Energy Planning project for both city and county to connect questions around planning, grid and renewables to be included and referenced throughout the plan.
- Include further support and engagement with businesses to de-carbonise their activities including in their production processes, distribution and use of supply-chains. Identify forums and organisations of high energy users and liaise with them to coordinate plans and actions including funding options.
- Highlight the risk of stranded assets if not meeting regulatory standards or not adaptable to climate change (temperature, flooding, etc.).
- Include actions to support the existing heat network and signpost to other networks in development (e.g. new DMU energy centre which will heat the majority of our campus through heat pumps).

De Montfort University

Climate Change Commitments:

Net Zero by 2032 through direct operations, by 2045 including indirect impacts

Carbon Management Plan: <https://www.dmu.ac.uk/about-dmu/sustainability/sustainable-campus/carbon-management.aspx>

Alignment of LCC's Climate emergency Action Plan with our own strategy

- The high prioritisation of climate action in the action plan is in strong alignment with DMU's own climate commitments.
- Committed to playing a 'civic' role to support people, communities and businesses in the Leicester area through partnership working

Opportunities for collaboration:

- We hope to play a part working in partnership with other actors in the city and beyond to support their own changes to address climate change.
- Our forthcoming energy centre which will heat the majority of our campus through heat pumps can serve as an exemplar for other local organisations
- Strong interest in engaging with citizens, businesses and organisations to motivate and inform climate actions

Leicester, Leicestershire and Rutland ICB

Climate Change Commitments:

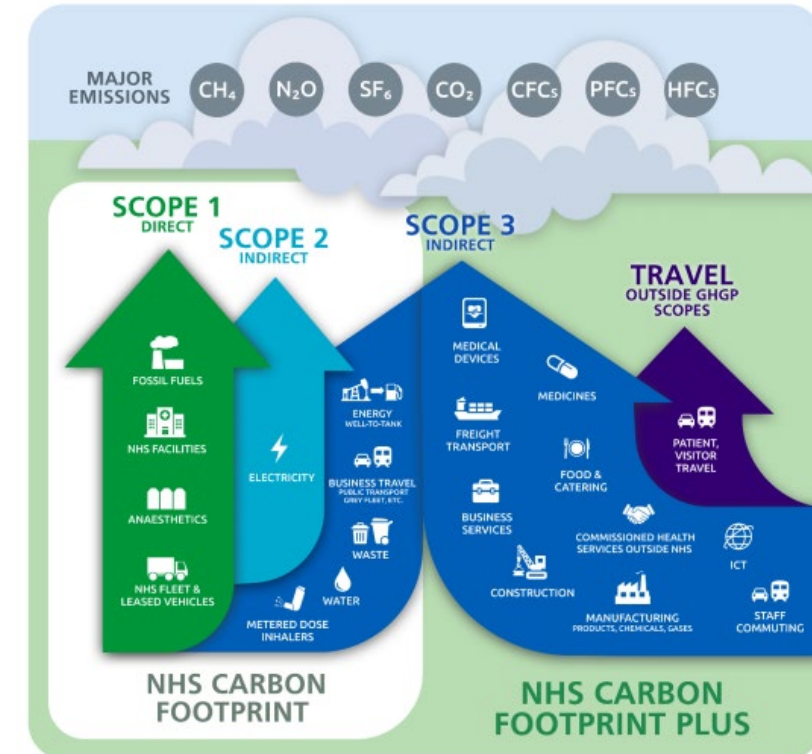
Net Zero by 2040 through direct operations, and by 2045 for indirect impacts

Alignment of LCC's Climate Emergency Action Plan with our own strategy

- There are many common themes in our plans – notably greening fleet, more sustainable purchasing decisions, 'care closer to home' models of care to reduce patient travel and waste management.

Opportunities for collaboration:

- Working to support more sustainable travel options for staff and visitors to our services (noting that the NHS is the biggest employer, with over 22,000 staff in the city) through bus services/park and ride facilities.



National Space Centre

Climate Change Commitments:

- Net zero (Scopes 1 & 2) by 2030

Alignment of LCC's Climate Emergency Action Plan with our own strategy

- The Charity has followed the recommended "Know your number, set a target, make a plan"
- CO2e reductions to date by using less from the grid: change of light bulbs, installation of solar panels, switch from gas to induction hobs in the cafe
- Gas boilers and chillers must be replaced by air-sourced heat pumps if the Net Zero target is to be achieved
- Well-placed to influence consumer behaviour through setting an example and present exhibition content on the planet's health

Opportunities for collaboration:

- Timing of the replacement of the gas boilers and chillers will coincide with the development of Abbey Court within Space City. There is the prospect of developing an energy centre for the wider site in collaboration with LCC
- High profile public engagement on site and via social media channels



Climate Change Commitments:

- Net Zero by 2040 (Science-Based Targets framework), voluntary offsetting operational carbon emissions from 2024
- More importantly, to work with our Clients on their Net Zero Carbon, Climate Resilience and Circular Economy journeys
- Sustainability Vision: <https://www.pickeverard.co.uk/vision/sustainability>

Alignment of LCC's Climate emergency Action Plan with our own strategy

- Our Vision is to create a collective culture, passion and ethos that motivates us to do the right thing, inspiring our staff to deliver better outcomes for our clients, and being accountable for our environment to create prosperous and sustainable communities.
- Our biggest impact is the work we do with our clients. Reduced carbon footprint working in local projects
- Shared focus on Net Zero Carbon, Climate Resilience and Circular Economy
- We declare a vested interest in the Action Plan success as one third of our staff works in Leicester!

Opportunities for collaboration:

- We are single suppliers of Multi-Disciplinary Services on the LCC Project Construction Professional Services Framework covering infrastructure, construction and maintenance building works, both new build and refurbishments
- Main offices in Leicester (Charles Street!) plus access to our Design, Management and Group Services staff, including our Sustainability and Social Value Champions
- Working with other key local and relevant stakeholders, including DMU, UoL, UHL NHS Trust, MNZH, National Grid, Severn Trent Water
- Provision of Social Value activities, community engagement, carbon offsetting / insetting opportunities, etc.